

399132 UV POWER CREW**\$40.00***

SIZES: S, M, L, XL, 2XL
 *15% upcharge for 3XL

OFFER DATE: 12/01/10
 END DATE: 12/01/13

Dri-FIT double knit piqué short sleeve tennis crew with contrast shoulder, neck band and side insets. UV protective material helps protect the athlete from all elements of the weather. Nike Team Sports jock tag at lower left hem. Embroidered Swoosh design trademark at upper right chest. Body length: 31.25" (size large).

FABRIC: 100% polyester.

100 White/White/(Black)	104 White/Cardinal/(Cardinal)	106 White/Black/(Black)
107 White/Navy/(Navy)	108 White/Royal/(Royal)	109 White/Scarlet/(Scarlet)
111 White/Dark Green/(Dark Green)		

NEW DRI-FIT

**399133 9" DRI-FIT WOVEN SHORT****\$35.00***

SIZES: S, M, L, XL, 2XL
 *15% upcharge for 3XL

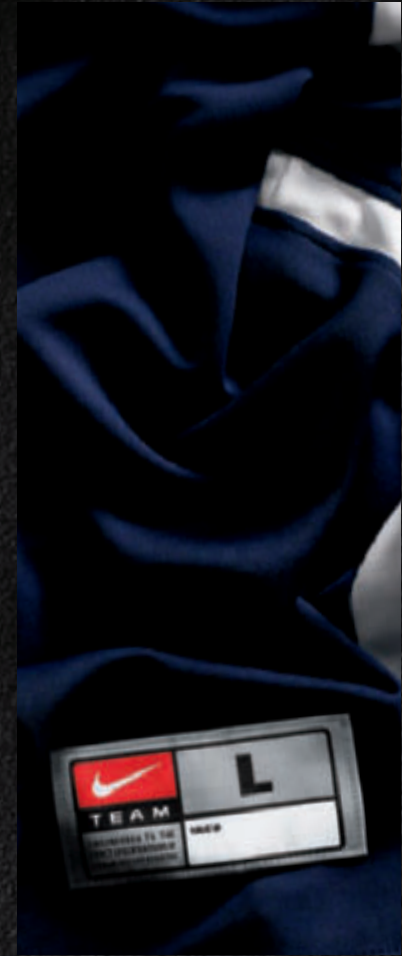
OFFER DATE: 12/01/10
 END DATE: 12/01/13

Dri-FIT woven short with contrast insets on sides. Elastic waistband with drawcord for adjustability and comfort. Embroidered Swoosh design trademark at lower left leg. Inseam: 9" (size large).

FABRIC: 100% polyester.

012 Black/White/(White)	100 White/White/(Black)	342 Dark Green/White/(White)
420 Navy/White/(White)	494 Royal/White/(White)	658 Scarlet/White/(White)

NEW DRI-FIT



MEN'S
TENNIS

Apparel

299438 RALLY CREW**\$25.00***

SIZES: S, M, L, XL, 2XL
 *15% upcharge for 3XL

OFFER DATE: 12/01/08
END DATE: 12/01/12

Short-sleeve Dri-FIT fabric tennis crew. Contrast color blocking to white. Embroidered Swoosh design trademark at upper right chest. Body length: 31.25" (size large).

FABRIC: 100% polyester.

012 Black/White/(White)	100 White/White/(Black)	106 White/Black/(Black)
342 Dark Green/White/(White)	420 Navy/White/(White)	494 Royal/White/(White)
546 Purple/White/(White)	612 Cardinal/White/(White)	658 Scarlet/White/(White)

DRI-FIT





429989 | **AIR MAX GLOBAL COURT** **\$85.00**

SIZES: 6-13, 14, 15

OFFER DATE: 10/1

Designed for the competitive club player looking for great comfort, stability and durability. True fit for a more accommodating forefoot fit.

UPPER: Performance synthetics and leathers provide exceptional fit and support. TPU heel strap for stability. XDR toe tip for the ultimate in durability.

MIDSOLE: New low-profile visible Max Air unit for long lasting heel cushioning. Phylon midsole with TPU shank for midfoot support.

OUTSOLE: Full-length XDR in a modified tennis herringbone pattern for extreme durability and traction on all surfaces. Flex grooves for improved comfort.

101 White/Crimson-Soft Grey-Dark Grey

102 White/Black-Wolf Grey-Varsity Maize



MEN'S
TENNIS

Footwear